

Campus Safety

CONFERENCE **CSC**

AT **ED**spaces

Designing the Future of Education



What is Handle with Care?

Establishing this Innovative Program on Your Campus.

Joseph Rice
Student Services Supervisor/
School Safety and Security
Coordinator
Westmoreland Intermediate Unit



All About Joe Rice

- Husband/Father
- Sgt. US Army
- Elementary Teacher
- Coach (Girls Volleyball/Baseball)
- Elementary Principal
- WIU Student Services Supervisor
- WIU School Safety and Security Coordinator
- LEMC
- Fusion Center Liaison
- Certified: ALICE Trainer, YMHFA Trainer, Stop the Bleed Trainer

Agenda

- What is happening now?
- What are ACEs and Protective Factors?
- What is Handle With Care?
- How do we start the program?
- What training sessions are needed?
- What are my next steps?

Today's Objective

- By the end of the session, you will
 - Know what Handle With Care is.
 - Know how to implement and use Handle With Care.
 - Have created your first steps in starting Handle With Care.
 - Have seen me model how to handle a student with care.

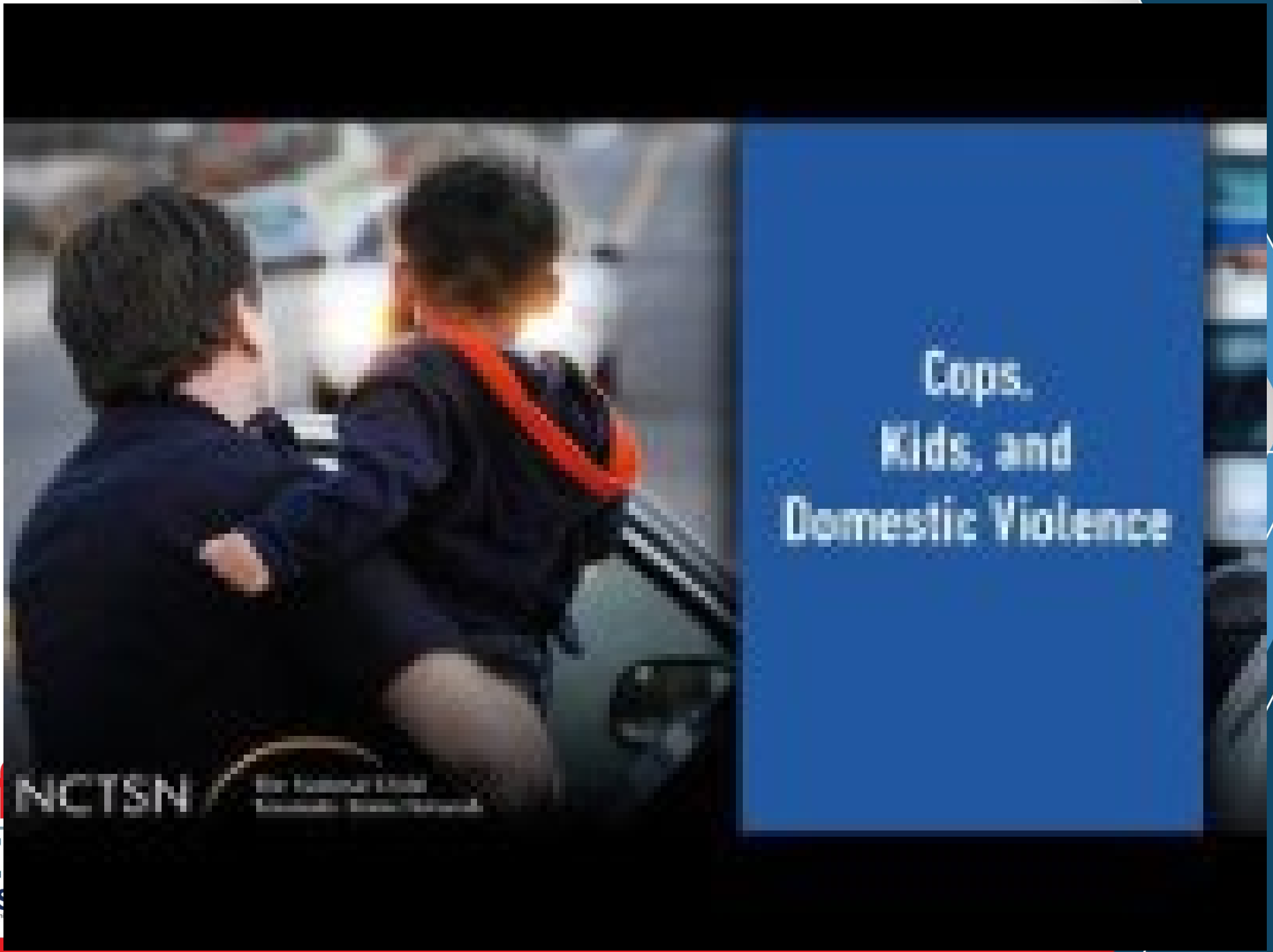
Help me know who is in the room:

- Who works in schools?
- Who is law enforcement, fire, ambulance service?
- Who is a mental health worker?
- Others?

What is happening now?

The National Child Traumatic Stress Network

- <https://www.nctsn.org/resources/cops-kids-and-domestic-violence-law-enforcement-training-video> (4:23-6:46)
- What did you see?
- What comes next?
 - Family?
 - LLE?
 - Children?



Cops,
Kids, and
Domestic Violence

Campus Safety NCTSN
CONFERENCE
AT EDS
Design

What are ACEs and Protective Factors?

ACEs: Adverse Childhood Experiences

- http://www.aceresponse.org/who_we_are/ACE-Study_43_pg.html
- <https://www.cdc.gov/violenceprevention/aces/about.html>
- Depending on year: Avg. 1.5
- What happens when they grow up?

Protective Factors: Positive encounters to lower the risk of ACEs' impact.

- #1 is a Caring Adult
- How can schools help?

**What is needed for one person to
care for another person?**

What is Handle With Care?

HWC was started in WV in 2013.

Here is how it works...

- Response Agencies respond to calls where children are present.
- They alert the school of the call.
- What is included, and what is not...
- What can the school do?

Our HWC Report Form



Train the School

Each school should create a HWC Response Team. It could be a SAP team or something similar.

[New HWC Materials TipSheetForTeachers 2023.pdf](#)

Teachers do not need the details, just to handle with care!



Tip Sheet for Teachers

USING A TRAUMA SENSITIVE LENS WITH STUDENTS

THINGS I MIGHT SEE

- Over or under reaction to physical contact, sudden movements and sounds
- Poor control of emotions
- Complaints of headaches, stomachaches or fatigue
- Unpredictable or impulsive behavior
- Difficulty with authority, redirection or criticism
- Separation anxiety or clinginess towards teachers
- Decreased interest in or withdrawal

THINGS I MIGHT DO

- Let relationships be the focus
- Develop consistent routines
- Provide daily-check ins
- Clarify expectations
- Teach coping skills such as breathing
- Provide opportunities to regulate
- Create safe, calming spaces
- Give extra time to do homework
- Create opportunities for expressing a range of emotions

THINGS I MIGHT SAY

- "I'm here for you"
- "You're not in trouble"
- "I am concerned about you"
- "How are you feeling?"
- "Could you use a break?"
- "Let's handle this together"
- "You are not alone"
- "I care about you"
- "It seems like you are going through a difficult time"
- "Come sit with me"

Highlands TEAR Team

Please reach out to the TEAR team at Highlands Family Center with any questions you may have about the TEAR program.

Supervisor

Jeannie Dennis
724-224-9006
jeannie.dennis@aiu3.net

TEAR Coordinator

Rayne Plance
412-598-3617
lorryne.plance@aiu3.net

TEAR Advocate

Crystal Castiglione
412-216-3876
crystal.castiglione@aiu3.net

Train Law Enforcement

GET THE COUNTY DA ON BOARD FIRST!

[New HWC Materials LawEnforcementFlyer 2023.pdf](#)

Law enforcement (and other response agencies) will need to know what the expectation is, some practice, and how to recover when perfection is not met.



HandleWithCare & LAW ENFORCEMENT

Supporting youth exposed to traumatic events so they can feel safe and succeed in school.

What Is It?

Handle with Care is a program designed to enhance communication between law enforcement, community mental health services and supports, and schools regarding children's exposure to traumatic events. HWC is aimed to ensure that children who are exposed to crime, violence, abuse, disaster, death, etc. receive early intervention so that they can succeed in school to the best of their abilities.

Law Enforcement's Role

If police respond to a scene where a child is present, notification should be provided to their school leaders and the trauma team at Highlands Family Center before the bell rings the next school day. If the concise, online HWC report is not submitted, the child may fail to receive positive attention or services from the helping professionals in their lives.

Research shows students who experience trauma are more likely to develop learning disabilities and behavioral disorders, be chronically truant, suspended, expelled, or dropout. The role of police is crucial in enhancing this channel of communication and responding with early intervention in school and social services for Highlands students.

What Is Its Significance?

When a student's brain is stuck in a survival function due to post-traumatic stress or threat of danger, they are in need of extra attention from their school professionals and community supports. Ample research shows trauma's cognitive, behavioral, and physical impacts across the lifespan. We can identify these students and intervene early with a multidisciplinary, trauma-informed approach.

Thank you for partnering with the TEAR Team at Highlands Family Center to implement Handle with Care.

Resources

<https://www.hit-reset.org/trauma-brain-health>
<http://handlewithcarewv.org/>

Handle with Care Notice Webform



Use your smart device to scan this QR code to access an HWC form.

When to send a Handle with Care Notice?

Some examples of when to submit a HWC notice include but are not limited to:

- Any time a child is present on a call.
- Arrest of a household member
- Search warrant served in residence
- Drug/alcohol overdose of a family member
- Death/suicide of a family member
- Incident of domestic violence
- Physical/sexual abuse or neglect
- Community violence
- Forced displacement from residence
- House fire, home disasters, etc.
- Witness to crime
- Hospitalization of a loved one

HWC Point of Contact

Rayne Plance, TEAR Coordinator
724-224-9006
lorryne.plance@aiu3.net

Provide information to Community Partners

Anyone can make a referral to the school.

[New HWC Materials ReporterFlyer 2023.pdf](#)

Providing community centers and gathering spaces with resources to be able to help.



HandleWithCare

EVERYONE IN OUR COMMUNITY CAN HELP PROTECT CHILDREN

We all need to step up and keep watch.
If you have any concerns, report it!
Our children need us!

Signs and symptoms of abuse and neglect

- Bruising, bites, burns, broken bones, or black eyes
- Consistently dirty or severe body odor
- Lack of care for serious medical needs or wound care
- Reluctant to be around a particular person
- Difficulty walking or sitting
- Demonstrates unusual sexual knowledge or behavior

Sometimes a parent's demeanor or behavior sends red flags about child abuse

- Shows little concern for the child
- Unable to recognize physical or emotional distress in the child
- Blames the child for all their problems
- Consistently belittles or berates the child
- Excessive corporal punishment
- Severely limits the child's contact with others
- Offers conflicting or unconvincing explanations for a child's injuries

Risk factors for families

- History of being abused or neglected
- Physical or mental illness
- Family crisis or stress, including parenting without support, domestic violence
- Children with developmental or physical disabilities
- Financial stress, unemployment or poverty
- Unusual social or extended family isolation
- Poor understanding of child development and parenting skills
- Alcohol, drugs or other substance abuse

Handle with Care Notice Webform



Use your smart device to scan and submit this QR code to let us know how we can help.

When to send a Handle with Care Notice?

Some examples of when to submit a HWC notice include but are not limited to:

- Arrest of household member
- Search warrant served in residence
- Drug/alcohol overdose of a family member
- Death/suicide of a family member
- Incident of domestic violence
- Physical/sexual abuse or neglect
- Community violence
- Forced displacement from residence
- House fire, home disasters, etc.
- Witness to crime
- Hospitalization of a loved one

If you are uncertain as to whether or not to submit a Handle with Care notice, please err on the side of caution and submit the notice.

TEAR Coordinator
Rayne Plance
412-598-3617
lorryne.plance@aiu3.net

We are ready to HWC, now what?

What does perfect look like?

What does success look like?

Where can I go for help?

**Remember, I care about you, and I
know you care about your students!**

Your Next Steps

Don't wait!

If you want to start HWC, make a goal right now for yourself.

Write it down!

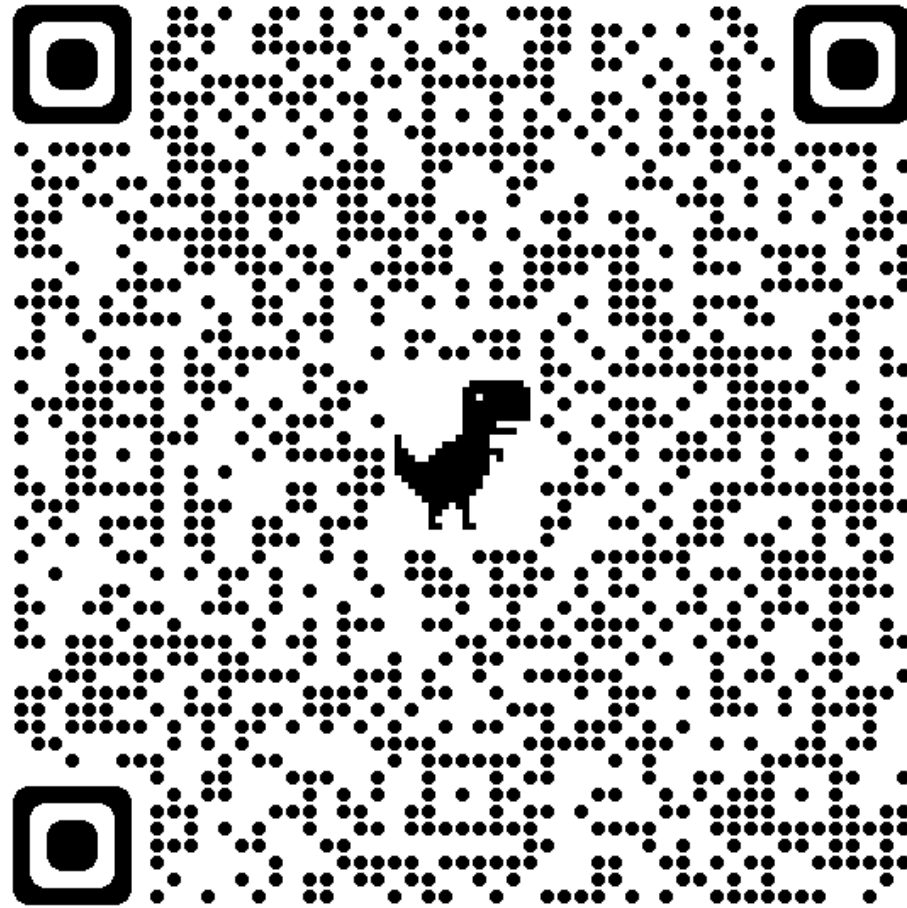
Put it in your phone.

Did I meet the objectives?

Do you...

- Know what Handle With Care is.
- Know how to implement and use Handle With Care.
- Have your first steps in starting Handle With Care.
- Know how to handle a student with care.

This slide deck:



Your feedback is greatly appreciated!
Please take a few minutes to scan this QR code and let me know how helpful this presentation was.

