

EDSPACES 2021 - CLASSROOM DESIGN

PITTSBURGH, PA

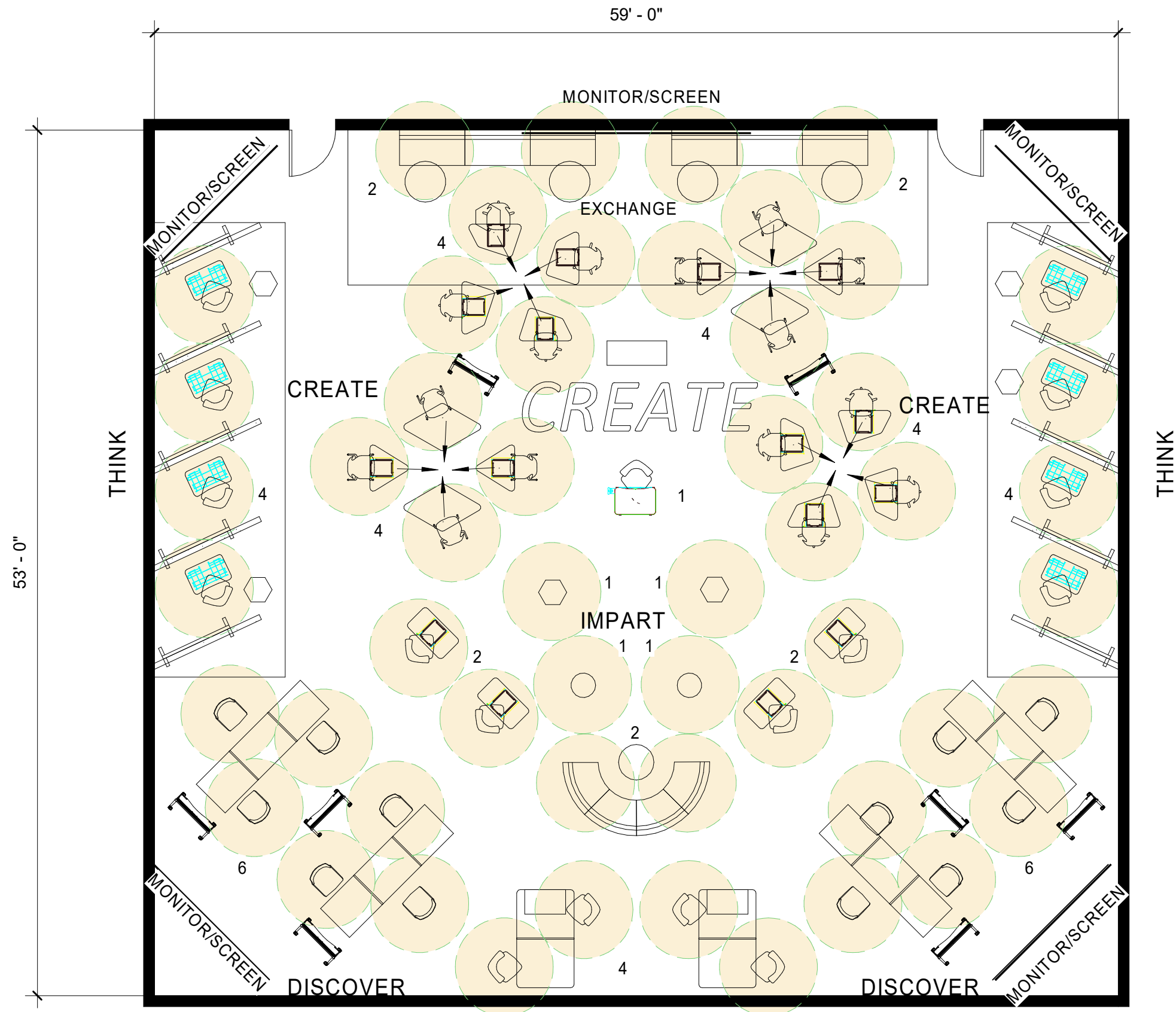
IMMERSIVE LEARNINGSCAPE CONCEPT

LITTLE - DESIGN

KI - FURNITURE

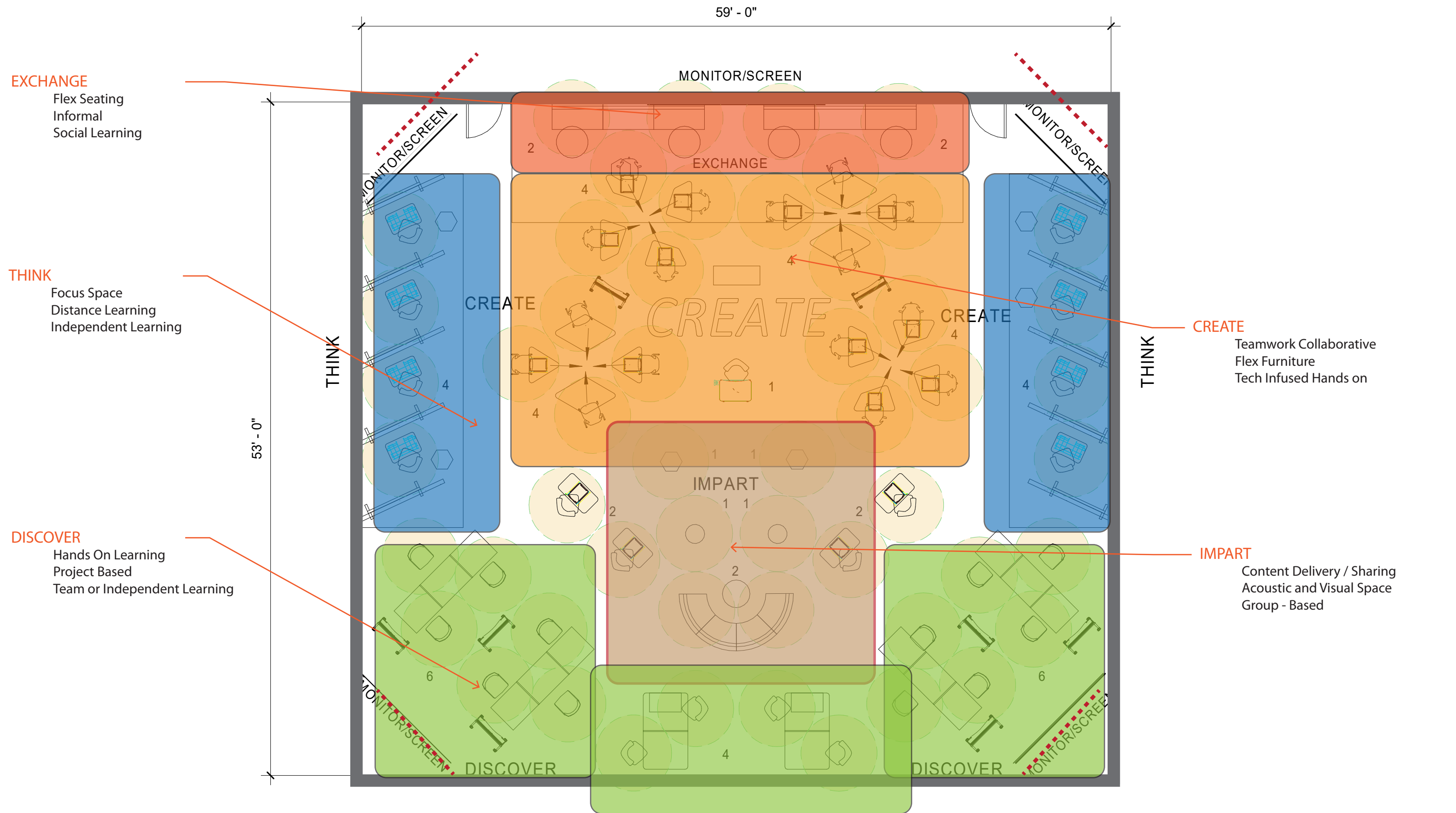
SMART - TECHNOLOGY

SHAW - FLOORING



50 Seats + presenters

IMMERSIVE LEARNINGScape PLAN - with Social Distancing Guidelines



IMMERSIVE LEARNINGSCAPE DIAGRAM

5 TYPES OF LEARNING SPACES:

EXCHANGE

Communal spaces for social learning and co-planning



THINK

Private spaces for individual research, critical thinking and assessments



DISCOVER

'Workshop' spaces for hands-on learning and exploration



CREATE

Flexible team spaces for project-based learning and collaboration



IMPART

Gathering spaces for short lectures, break-outs and distance learning



For 21st Century learning to be successful, it's imperative that the classroom gives way to a combination of spaces that together make a landscape for various ways of scholarship and multiple opportunities for size-specific learning. These spaces allow for technology-focused, project-based learning. They allow flexibility of activities and education, unexpectedness in thought provoking collaborative environments and brainstorming space for innovative and creative learning. This landscape of learning areas will better facilitate and encourage interdisciplinary innovative encounters between students and faculty, and will address the potential for every square foot of space to be maximized as learning spots, nooks, paths and spaces. The Immersive LearningScape shall be a place where there are five levels of learning spaces based on the size of teams of learners.

CREATE

Focuses on teamwork learning. These spaces can be arranged in multiple configurations allowing for flexibility of engagement and multiplicity of programming, as well as interactive learning in small to medium size groups.

EXCHANGE

Inspired by the potential of social learning. Paralleling that of academic learning, this space becomes communal space, an environment shared between students, guests and citizens alike. Rendered as a vertical space, this dynamic space unites all learning academies.

IMPART

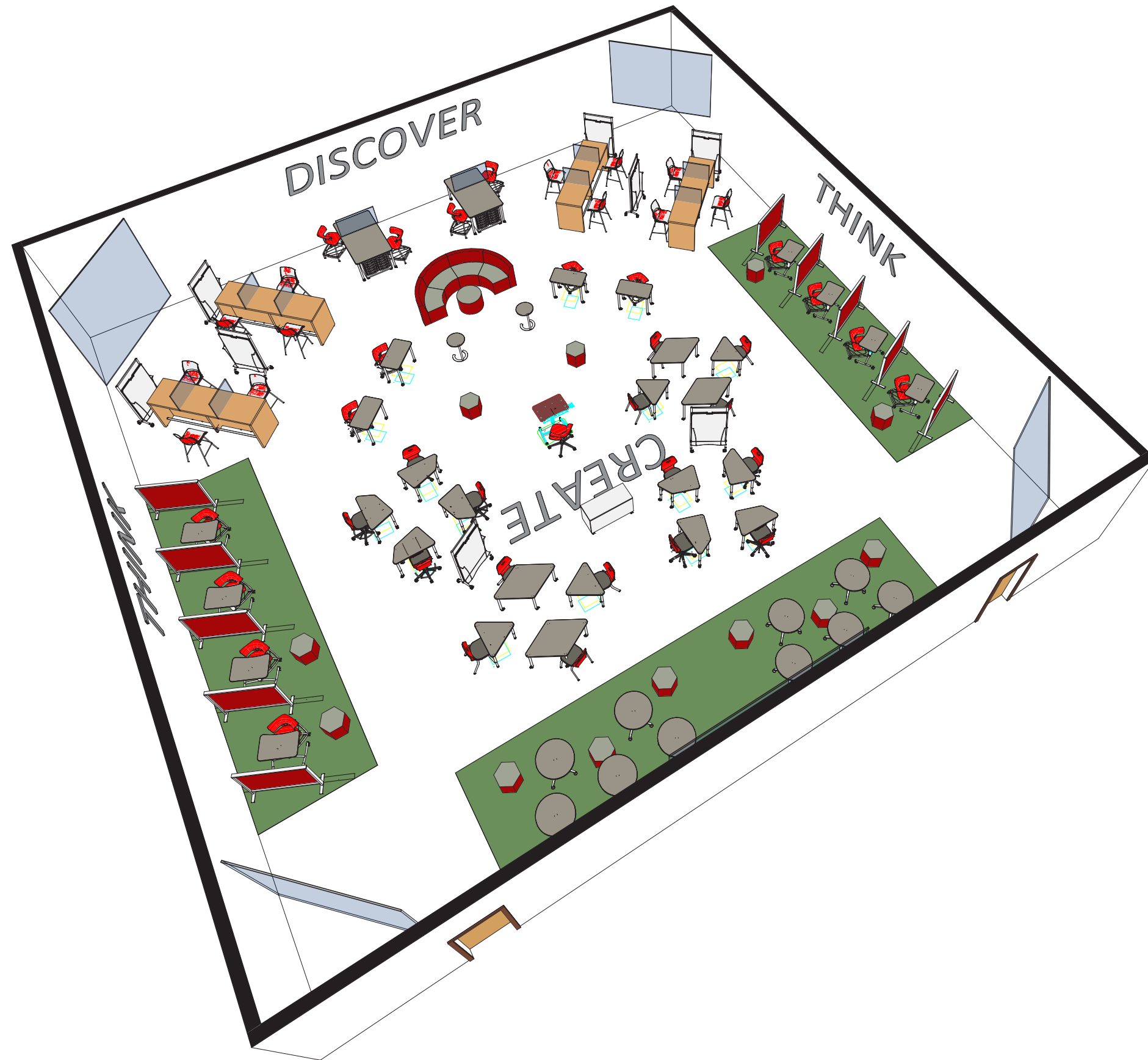
Rendered more as a typical classrooms. These spaces accommodate larger group gatherings, but feature break-out zones for smaller team areas and operable partitions to combine two classrooms for very large gatherings.

THINK

Based on the concept that learning also occurs at the individual level. Small intimate spaces allow for the time and environment to analyze and investigate, think and digest information.

DISCOVER

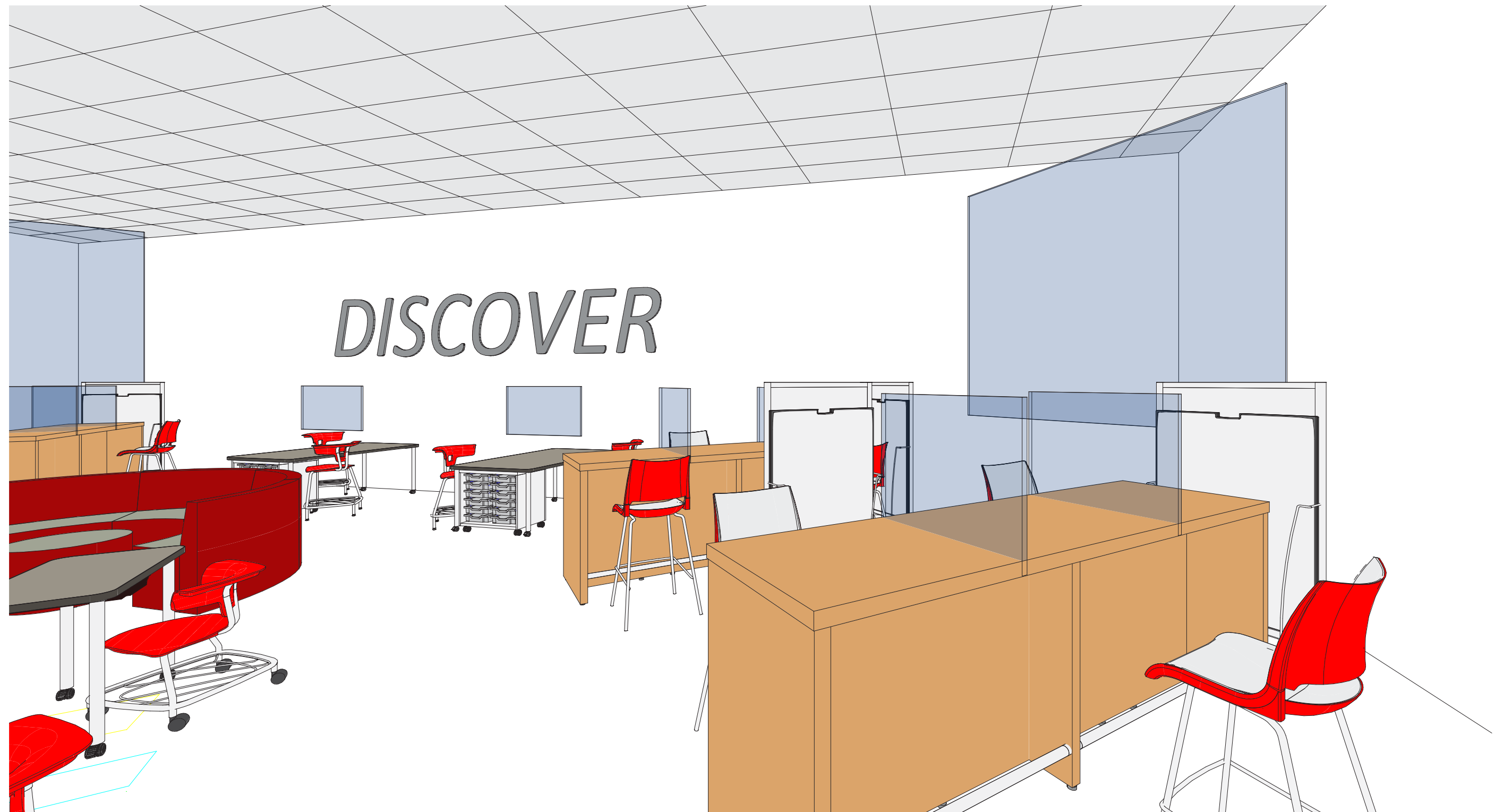
This 'workshop' environment is set up for testing, hands-on and exploration, which allow for larger group meetings where equipment is necessary. These environments will encourage arts and sciences to co-create and invent via fabrication, testing, deconstruction, reconstruction, production and design.



THINK



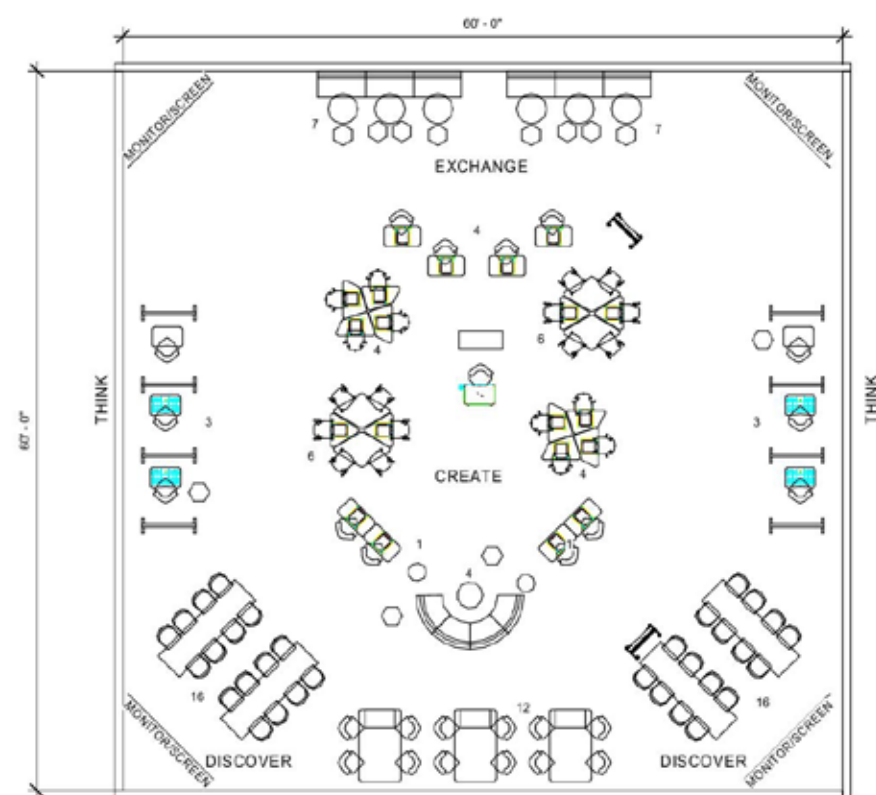




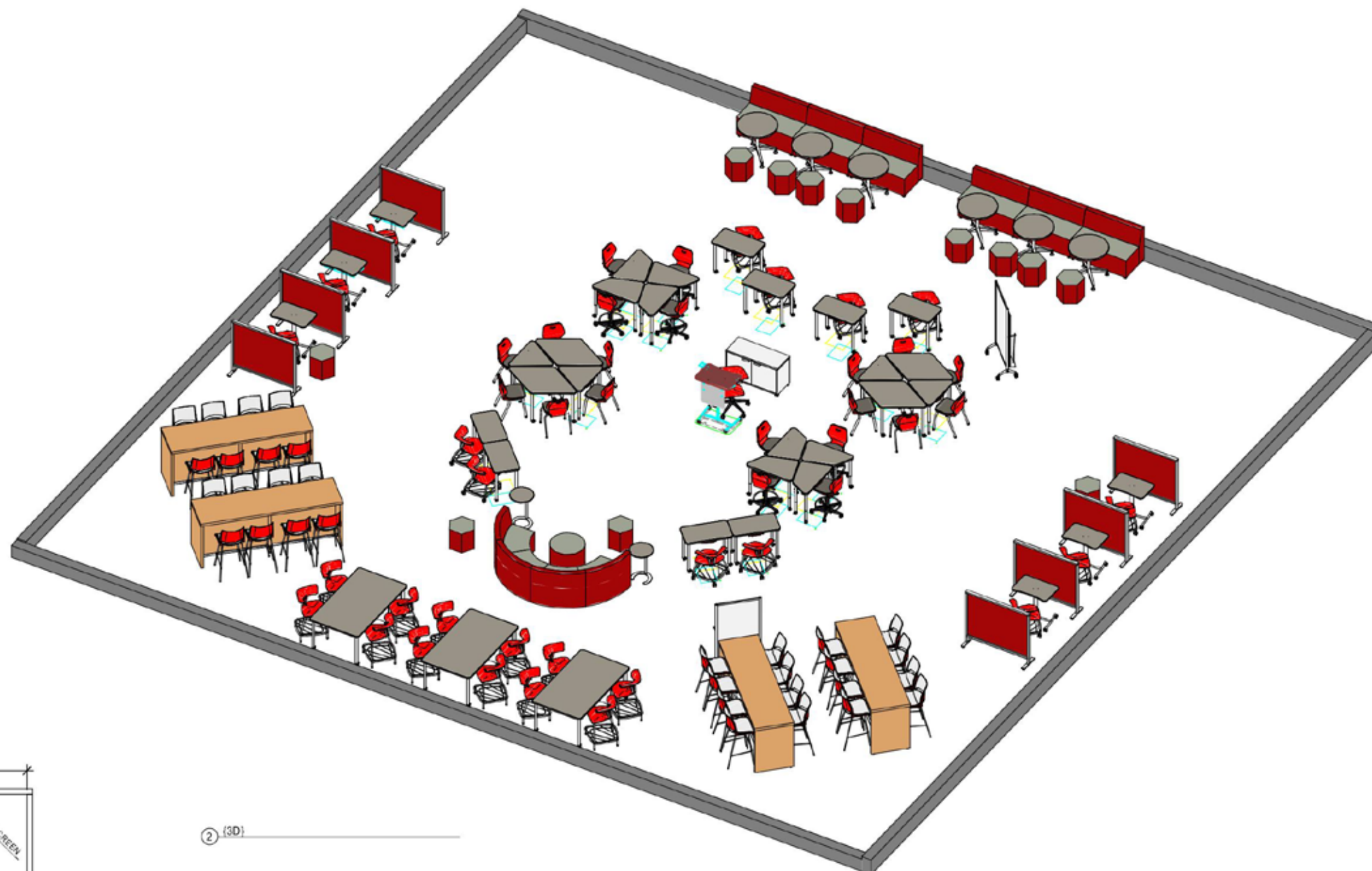
DISCOVER







① Level 1
1/8" = 1'-0"



② (3D)

IMMERSIVE LEARNINGScape FULL ATTENDANCE LAYOUT