

Education Conference

Pre-Conference Events

Tuesday, October 24

1:00 PM

Educational Distribution Symposium

Connecting & Growing the Distributor, Vendor and Design Communities

KCCC Meeting Room #2215C



Welcome/Opening Remarks
Moderator: *Tom Brennan*,
President, School Outfitters;
EDmarket Chair of the Board

1:15-2:00 PM

General Session: The Challenging and Changing Education Industry



James Johnson, Senior V.P.,
Marketing and Business
Development, Virco

2:00-2:30 PM

Networking Refreshment Break

2:30-3:15 PM

1) What Are Your Short- and Long-Term Game Plans for Your Dealership?

(For Owners & Key Executives)



Speaker: *Mark C. Lewis*,
President/CEO Shiffler Equipment
Sales, Inc. and President
of MCL Equities, LLC

2) Connecting and Competing in Today's Education Market

(For Sales Managers/Sales Professionals)



Moderator: *Mark Hubbard*,
Paragon Furniture



Mark Maltese, V.P. Sales & Marketing at
Shiffler Equipment Sales



Jeff Schreiner, V.P. of Sales/Marketing at
Palmer HPMilton



Jonathan Vogelsang, Director of Educational
and Industrial Sales at MooreCo



Mark Waldecker, KI K-12 Dealer Manager
at KI

3:15-3:45 PM

Networking Refreshment Break

3:45-4:30 PM

General Session: Interacting with Architects and Designers



Moderator: *Doug Jehle*,
President/C.E.O.,
Frost-Barber, Inc.



Jeff Beadle, Interior Designer, Martin Public
Seating



Gregory Cooney, Owner, Frank Cooney
Company



Peggy Hoffmann, Educational Interiors,
Principal, FGM Architects



Lennie Scott-Webber, Owner/Principal,
INSYNC: Education Research + Design



Karen Volner, National Field Sales Director,
Furniture Sales, Staples Business Advantage

4:30-5:30 PM

Cocktail Reception

Thanks to our generous sponsors:



The Educational Distribution Symposium required an RSVP at the time of registration.



EDspaces is a great place to earn your Continuing Education Units (CEUs). To determine which sessions qualify for AIA credit, please see LUs listed under each session. Learning objectives for each session can be found at www.ed-spaces.org/education.

AIA LU = American Institute for Architects Learning Unit

GBCI = Green Business Certification Inc. The GBCI course ID for EDspaces is 0920014260.

HSW = Health, Safety, Welfare credit

IDCEC = Interior Design Continuing Education Council CEU.

For questions regarding EDsession credit, please contact Adrienne Dayton at adayton@edmarket.org or (800) 395-5550, ext. 1031. Please note: For GBCI and IDCEC, participants will need to self-report CE hours through their credentials account.

Tuesday, October 24

1:30-4:30 PM

Pre-Conference Learning Lab Education's Evolution to Meet the Needs of the 21st Century Workplace

"INTERACT" Classroom
by Learniture
KCCC Meeting Room #2105

Experience a model facility from visioning to built outcome that serves as a national example for innovative delivery of workforce-ready graduates. The Missouri Innovation Campus (MIC) just opened a new purpose-built facility just in time for the 2017-2018 school year. Attendees at this session will talk to the team of educators who created the program, the business partners that help develop the curriculum, the design team that translated their vision into reality, and the teachers and students who teach and learn in it.

Learning Lab Segments

- Part 1) Introduction to the Missouri Innovation Campus
- Part 2) Character of the educational environment
- Part 3) Mini TED Talks on "education to workplace" challenges and opportunities
- Part 4) Future of education and the convergence of education & work



Dr. Charles Ambrose, President, University of Central Missouri

Stan Elliott, Director, Missouri Innovation Campus Program

Kevin Greischar, Principal, DLR Group

Elaine Metcalf, Principal, Summit Technology Academy/Missouri Innovation Campus

David Reid, David Reid, Principal, Gould Evans Design

The Pre-Conference Learning Lab required a separate registration and is a ticketed function. Please check EDspaces on-site Registration to see if space is available. The pre-conference education continue with a tour of the Missouri Innovation Campus. See page 14 for more information.

**Credit: AIA LU/HSW = 3
GBCI = 3**

Wednesday, October 25

8:00-9:15 AM

Designing a Culture as Opposed to Designing Spaces

Learning Commons Classroom by Demco, Inc. KCCC Meeting Room #2104A



Dalane Bouillion, Educational Planner, VLK Architects

Kenneth Hutchens, Principal of Creative, VLK Architects

Culture is elusive, complex, and difficult to explain. However, culture permeates our schools and is manifested in beliefs and actions. This session will provide an interactive, design thinking discussion in order to challenge us to consider district culture in order to support academics and needed future learning environments.

*Credit: AIA LU = 1.25
IDCEC LU = 1
GBCI = 1*

Modern Learning in Older Buildings: Furniture as a Tool for Creating Collaboration

Learning in Motion Classroom by DLR Group/Scott Rice Office Works KCCC Meeting Room #2104B



Gwen Morgan, Interior Designer, Stantec

Desiring to address the changing needs of today's students while making efficient use of existing facilities, Coppell ISD upgraded the furniture solutions for learning spaces across fourteen existing Campuses. This large scale endeavor brought new life to spaces originally intended for an older educational model. The planning process and design methodology employed offer an inspirational case study of strategic revitalization. The process, the outcome, and post occupancy survey results will be shared in this presentation.

*Credit: AIA LU = 1.25
IDCEC LU = 1
GBCI = 1*

Career Academy Model High School: A New Prototype to Serve Rural America

"ENGAGE" Classroom by Susan Gladden Interiors Exhibit Floor Booth #2304



Mike Denz, AIA, Senior Associates, FGM Architects

James Woods, Principal, Director, PreK-12 Education, FGM Architects

Michael Smith, Superintendent, Mount Vernon Township H.S. District 201

The Superintendent will present the district's journey to a career academy model curriculum to address career and college readiness goals, how business and community partnerships were developed to support the new curriculum, and how this can serve as a model in rural America. The architects will present the planning and design of a new high school to take advantage of a unique opportunity the school district identified to support the new curriculum and realize their new educational goals and objectives.

*Credit: AIA LU = 1.25
GBCI = 1*

The Future of the Faculty Workplace: A More Engaged World for Teachers

"THRIVE" Classroom by Moseley Architects Exhibit Floor Booth #2341



David Reid, Principal, Gould Evans Design

Greg Owsley, Principal, Director, STEAM Director & Math Teacher, Rockhurst High School

Trevor Croghan, Director, Learning Environments, One Work Place

Stacy Roth, Director of Education Solutions, Scott Rice Office Works

Teachers are asked to do a LOT in our transformation to 21st century learning. Yet little has changed in the way schools support them. How can school culture and place

positively affect the demanding expectations on teachers? How do we support more positive interactions with students? How do we provide more effective collaboration and professional development to support evolving pedagogy? How can technology be utilized to help overcome outdated paradigms of current faculty workplace thinking?

*Credit: AIA LU = 1.25
GBCI = 1*

9:30-11:00 AM

Plenary Session Creative Schools: Revolutionizing Education from the Ground Up

KCCC Meeting Room #2103



Sir Ken Robinson
Sponsored by



National education systems worldwide are being reformed to meet the challenges of the 21st Century. As a respected adviser to governments in Europe, Asia and the United States, Sir Ken argues in this powerful presentation that many countries are pushing reforms in the wrong direction and that the dominant culture of standardization and testing is stifling the very capabilities that our children, communities and economies need most.

Drawing from his groundbreaking books, *Out of Our Minds: Learning to Be Creative*, and *Creative Schools: The Grassroots Revolution that's Transforming Education*, he explains why too many are locked into a model of education shaped by the Industrial Revolution and a narrow idea of academic ability. Urging schools and colleges everywhere to rethink their basic assumptions about intelligence and achievement, Sir Ken focuses on the vital questions:

- Why is it essential to promote creativity?
- Is everyone creative or just a select few?
- Why do so many adults think they're not creative?
- Can creativity be developed?

If so, what changes are needed in our schools and education systems and how can they be brought about? Sir Ken argues for radical changes in how we educate all students to meet the extraordinary challenges of living and working in the 21st century.

About Sir Ken Robinson:

An internationally-recognized authority in creativity and innovation in education and business, Sir Ken Robinson is also one of the world's leading speakers. Videos

of his famous talks to the prestigious TED Conference are the most viewed in the history of the organization and have been seen by an estimated 300 million people in over 150 countries. In 2003, he received a knighthood from Queen Elizabeth II for services to the arts. His latest book, *Creative Schools: The Grassroots Revolution That's Transforming Education* (Viking, 2015), written with Robinson's trademark wit and engaging style, includes groundbreaking research and tackles the critical issue of how to transform the nation's troubled educational system.

*Credit: AIA LU = 1
GBCI = 1*

11:30 AM-12:30 PM

Integrating Sustainability and Pedagogy

Learning Commons Classroom by Demco, Inc. KCCC Meeting Room #2104A



Sam Batchelor, Partner, designLAB architects

Kelly Haigh, Partner, designLAB architects

Matt Kirchman, President, ObjectIdea

Members of the integrated design team at the Hitchcock Center for the Environment will present the interactive and educational overlay that transformed the building from an innovative sustainable project to an engaging learning tool both within and away from the building. As a project seeking Living Building Challenge certification, the team leveraged the requirements of the LBC to amplify the core mission of the institution. The center's belief in place, systems thinking, and hands-on education are manifest in the artwork, exhibits, and interactive dashboard built into the building. The materials generated for these projects are also being integrated into an exhibition of bio-mimicry at a national art and nature museum.

*Credit: AIA LU/HSW = 1
GBCI = 1*

Exterior and Interior Connectivity: Early Learning Design Process and Post Occupancy Proof Learning in Motion Classroom by DLR Group/Scott Rice Office Works KCCC Meeting Room #2104B



Dave Frigo, PLA, ASLA, LEED AP BD+C, Principal, Hitchcock Design Group

Lauren Peterson, Project Designer and Associate, Legat Architects

Robin Randall, AIA, LEED BD + C, Vice President and Director of PreK-12 Education, Legat Architects, Adjunct Professor of Architecture, Judson University.

Tony Rossi, Executive Director of Facilities and Operations, Community Consolidated School District 59

This workshop and panel discussion will demonstrate a pedagogically centered process and delivery of evidenced-based design in early learning environments. Case studies of interior and exterior connectivity will show proof of expanded curriculum opportunities and increased learning environment exploration and spontaneous learning. Design intervention examples will include corridor small group pull-out zones, large motor skills areas, sensory gardens, and demonstration kitchens.

*Credit: AIA LU = 1
GBCI = 1*

A Community Changed: How Tiny Ignacio, Colorado Designed a Big Future

"INTERACT" Classroom by Learniture KCCC Meeting Room #2105



Stuart Coppedge, Firm Principal, RTA Architects

Rocco Fuschetto, District Superintendent, Ignacio School District 11-JT

Located 325 miles southwest of Denver, Ignacio is "tri-cultural", with Southern Ute Indian, Hispanic, and Anglo heritage. Low performance ratings and poor buildings made Ignacio a failing district, but Superintendent Rocco Fuschetto set out on a five-year journey

to change the district and the surrounding community forever. Join this story about creating 21st century learning environments, building first class supporting facilities, and transforming a community. Add your own experience and inspire your peers.

*Credit: AIA LU/HSW = 1
GBCI = 1*

STEAMing Down River: A Fresh K-8 Model

"ENGAGE" Classroom by Susan Gladden Interiors Exhibit Floor Booth #2304



Olivia Graf Doyle, Design Principal, Architecture for Education, Inc.

Dr. John Puglisi, Superintendent, Rio School District

Based on the neighboring river's meander, we take participants on a journey surrounding a newly-designed K-8 STEAM Campus, planned to bring unique learning options to a formerly under-served student population. The presentation discusses the "3 I's": integration, implementation and importance of STEAM on this Campus and beyond. The discussion touches on four major points: concept creation through shared pedagogy; implementing collaborative workshops to involve students, teachers, district staff and the greater community; design development; and integrating landscape and interior ideas with cultural significance to foster inclusive learning.

*Credit: AIA LU = 1
GBCI = 1*

Navigating History: Balancing Educational Needs, Project Budgets, and Heritage within Historic Campuses

"THRIVE" Classroom by Moseley Architects Exhibit Floor Booth #2341



Keri Stevenson, Architect, Dekker/Perich/Sabatini

Julie Walleisa, Principal/Architect, Dekker/Perich/Sabatini

An educational planner and an architect who focuses on historic preservation will use case studies to demonstrate how two different

100-year-old, multi-building Campuses with distinctive architectural styles have navigated this challenge. Strategies will be discussed for balancing historic integrity with a school's educational mission, addressing difficult demolition decisions, and working within public funding constraints, as well as how strategies may differ between new construction and renovation/addition projects and between eligible and listed properties.

Credit: AIA LU/HSW = 1
GBCI = 1

1:30-2:30 PM

Makerspaces: Redefining Libraries and Museums Learning Commons Classroom by Demco, Inc. KCCC Meeting Room #2104A



John Clark, Principal, Cordogan Clark & Associates

Osleide Walker, Associate, IBI Group to the session on Makerspaces

Since 2013 when the American Library Association (ALA) announced the formation of its Center for the Future of Libraries, it has focused much of its work on identifying new emerging trends relevant to libraries, librarians, and their communities. Understanding these "currents" shaping society can better enable us to envision the future. In many libraries and museums today, spaces for the "life" learning stage are now seen in the growing popularity of Makerspaces that allow young learners spaces for hands-on projects. Here they can apply their learning to find out what they know and don't know. This talk will provide an overview of some of the most exciting new Makerspaces, and how they work.

Credit: AIA LU = 1
GBCI = 1

Pathways to the Future of Medical Education Facilities Learning in Motion Classroom by DLR Group/Scott Rice Office Works KCCC Meeting Room #2104B



Tanner Clapham, AIA, NCARB, Associate, CO Architects

Jonathan Kanda, FAIA, LEED AP BD+C, Principal, CO Architects

Giulia Bonaminio, PhD, Associate Dean and Director, Office of Medical Education, University of Kansas School of Medicine

Big changes in healthcare have prompted major pedagogical shifts in medical education that demand innovative architectural solutions. At the University of Kansas Medical Center, these developments instigated a renewal of their educational facilities, supported by an in-depth analysis and visioning process to create an optimized programmatic framework, specific to the institution's strategic plan. Learn how the University's goals for interprofessionalism, active-learning, growth, and connectivity directly informed the programming and architecture of the Health Education Building.

Credit: AIA LU/HSW = 1
GBCI = 1

Next Generation School Design "INTERACT" Classroom by Learniture KCCC Meeting Room #2105



Brad McKenzie, Project Architect, Sapp Design Associates Architects

Michael Sapp, President, Sapp Design Associates Architects

John Jungmann, Superintendent, Springfield Public Schools

This presentation will discuss the science of learning, the impact of technology in education, potential partnerships in education, and will review trends in the design of Next Generation Schools from Pre-K to 12th grade. Case studies will include the new Springfield Public Schools Sherwood Elementary, showcasing their partnership with the Boys and Girls Club and NetZero capable design.

Credit: AIA LU/HSW = 1
GBCI = 1

From Sloppy Joes to Sushi: Why Changes in School Cafeterias Matter

"ENGAGE" Classroom
by Susan Gladden Interiors
Exhibit Floor Booth #2304



David Powell, Senior Project Manager, Wight & Company

Wendy Watts, Interior Architecture Lead, Education Practice, Wight & Company

Scott Reitano, Principal, Reitano Design Group

Sean Carney, Asst. Superintendent for Business Services and Chief School Bus Officer, Adlai E. Stevenson H.S. District 125

As schools adapt/reinvent their facilities to better support future-ready learning, educators are realizing that food does indeed influence performance in the classroom. What role can the food service environment play in setting the tone for students' overall school experience? We invite you to examine with us key factors and influencers in truly enticing our children to eat healthier, and its impact on the school experience.

Credit: AIA LU/HSW = 1
GBCI = 1

3-in-1: Serving and Integrating Three Distinct Audiences and Purposes in One Building "THRIVE" Classroom by Moseley Architects Exhibit Floor Booth #2341



Duane Cash, Project Manager, ACI Boland Architects

Dr. Michelle Hubbard, Assistant Superintendent, Shawnee Mission School District

Michael Kautz, Principal, ACI Boland Architects

Dr. Kenny Southwick, Principal, ACI Boland Architects

The Shawnee Mission School District Center for Academic Achievement intertwines spaces for education, administration and

community in one building — a new approach that creates a unique learning environment and strengthens connections between three distinct but interrelated groups. The result is broadened perspectives and incredible learning opportunities for students. We'll illustrate this fresh, flexible and integrated layout that encourages beneficial, organic interactions. We'll highlight efficient space planning, enhanced sustainability and factors that create a healthy environment.

*Credit: AIA LU/HSW = 1
GBCI = 1*

3:30-4:30 PM

Creating Classrooms with Mission in Mind
Learning Commons Classroom
by Demco, Inc.
KCCC Meeting Room #2104A



JD Ferries-Rowe, Chief Information Officer, Brebeuf Jesuit Preparatory School

Jennifer LaMaster, Assistant Principal, Brebeuf Jesuit Preparatory School

The design of classrooms is influenced by culture and in turn they influence the type of education that can be conducted within them. The factory model of employment created the traditional classroom. Brebeuf Jesuit embarked on a classroom redesign by first asking ourselves, "what kind of teaching we wanted? How should students function? What is the relationship between teacher and student?" Our reflections transformed our rooms to technology friendly, flexible, spaces and the learning followed suit.

*Credit: AIA LU/HSW = 1
GBCI = 1*

Great Scott! The Benefits Going Back to the Future with Adaptive Reuse
Learning in Motion Classroom
by DLR Group/Scott Rice Office Works
KCCC Meeting Room #2104B



Curtis Johnson, Principal, DLR Group

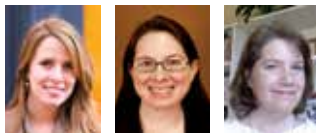
Ryan Lindquist, Director of Business Support Services, Elkhorn Public Schools

Vanessa Schutte, Principal, DLR Group

Many districts are recognizing not only the economic benefits of adaptive reuse, but also the intrinsic value it offers students, teachers, and communities. Join this panel as we discuss Elkhorn Public School District's success creating an innovative teacher training center through adaptive reuse of an existing building.

*Credit: AIA LU/HSW = 1
GBCI = 1*

Learning Together: A Deep Discovery Process Guiding Innovation in Collaborative Learning Environment Design
"INTERACT" Classroom
by Learniture
KCCC Meeting Room #2105



Shannon Payton, Associate AIA, Integrus Architecture

Loretta Sachs, Associate, Integrus Architecture

Ann Healy-Raymond, Port Townsend School District Librarian, Port Townsend School District

Explore the design outcomes of a facility planning process that prioritizes rigorous curiosity, revisions the classroom, and uncovers values around learning and teaching collaboratively through localized project-based education in the Pacific Northwest. Designed to reinvigorate the aspirations of the local community, discover what happens when the planning process leverages indoor and outdoor learning environments as a safe home base that elementary school students use as a launching pad to explore their world.

*Credit: AIA LU/HSW = 1
IDCEC LU = 1
GBCI = 1*

Enhancing Community through the Arts
"ENGAGE" Classroom
by Susan Gladden Interiors
Exhibit Floor Booth #2304



Ben Youtz, designLAB architects

Robert Miklos, Principal, designLAB architects

Curt Scheib, Dean, Division of Visual and Performing Arts, and Professor of Music, Voice, Seton Hill University

The Seton Hill Dance and Visual Arts Center project, which opened in the fall of 2015, involved the planning, design, and construction of a new 45,000SF Arts Center for Seton Hill University in Greensburg, PA. Built in the downtown core, rather than on the Campus outside of town, the primary project goals were to expand Community-University partnerships through the arts; develop the Arts Center as an economic catalyst for Greensburg's struggling retail core; and enhance the City's Cultural District aspirations.

*Credit: AIA LU/HSW = 1
GBCI = 1*

Furniture as a Learning Tool: Drawing Inspiration beyond Education
"THRIVE" Classroom
by Moseley Architects
Exhibit Floor Booth #2341



Amy Wood, Director of Technology, Granbury ISD

Konrad Judd, Director of Design, Huckabee

Tami O'Neal, Furniture Selection Coordinator, Huckabee

Furniture can make or break a learning environment; it is key to engaging learners, supporting the profession of teaching and informing use of space. Often, however, school districts select from typical K-12 furniture options. One district looked beyond typical to develop a furniture solution that maximized instructional and economic value as part of a comprehensive high school modernization. They gained square footage, increased utilization and delivered a 21st century learning environment for less than anticipated.

*Credit: AIA LU = 1
IDCEC LU = 1
GBCI = 1*

Thursday, October 26

8:00-9:15 AM

Space Matters: Research That Begins to "Prove" It Learning Commons Classroom by Demco, Inc. KCCC Meeting Room #2104A



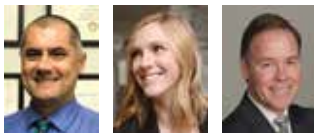
Jim French, K12 Global Sector Leader, DLR Group

Lennie Scott-Webber, Owner/Principal, INSYNC: Education Research + Design

Can we demonstrate that the design of the built environment for grades 9–12 impacts student academic engagement levels? A survey instrument for post-occupancy querying both educators and students, with a convenience sample was designed and tested. Goals included: (1) answer the research question; (2) build a reliable and valid instrument; and (3) hopefully research significance. Respondents saw a real effect of the physical environment on student engagement in both their teaching and learning.

*Credit: AIA LU/HSW = 1.25
GBCI = 1*

Capitalizing on Serendipity to Facilitate Organizational Change Learning in Motion Classroom by DLR Group/Scott Rice Office Works KCCC Meeting Room #2104B



David Maroney, President, ATS&R

Kara Rise, Interior Designer, ATS&R

John Alberts, Executive Director of Educational Services, Austin Public Schools

In January 2011, the Austin Public Schools conducted a community facilities analysis as a response to space need issues. What resulted was a new building, but also a disruptive innovation in the middle of the district. In this

session you will learn about how the district used this opportunity to spur on further systemic change, while utilizing the expertise of a university learning technology media lab, an architectural firm, and improv comedy school.

*Credit: AIA LU = 1.25
IDCEC LU = 1
GBCI = 1*

Green Schoolyards for Healthy Schools and Healthy Communities "THRIVE" Classroom by Moseley Architects Exhibit Floor Booth #2341



Moderator: Robin Randall, Vice President and Director of PreK-12 Education, Legat Architects and Adjunct Professor of Architecture, Judson University

Mark Kozlowski, Design Manager, Civil Engineering, Chicago Public Schools

Meg Kelly, Senior Manager for Space to Grow, Healthy Schools Campaign

Loren Johnson, Project Designer and Associate, Legat Architects
This workshop will explore the process, implementation, and operations of Chicago's Space to Grow program, which transforms schoolyards into spaces to play, learn, and be outside. Research shows that outdoor learning leads to improved academic outcomes, and incorporating outdoor activity into the school day helps students focus and learn better. Case studies of sustainable schoolyard design and site improvements using green infrastructure (e.g., rain gardens, bioswales, etc.) demonstrate cost effective applications.

*Credit: AIA LU/HSW = 1.25
GBCI = 1*

9:30-11:00 AM

Plenary Session: Iteration and Innovation in Education

KCCC Meeting Room #2103



Jaime Casap, Google Education Evangelist

As the world gets more connected, it also gets more complex. We now operate on a global scale and our job in education is to help learners develop the knowledge, skills, and abilities they will need to thrive in this new environment. We are preparing them to solve global problems we haven't defined yet, using technology that hasn't been invented, in roles that do not exist. To thrive in this new era, learners need to know how to learn, problem solve, iterate, create, collaborate, communicate, and to think critically. What we need more than anything in education is a culture of innovation and iteration in order to build new learning models supported and enabled by technology to foster student focused learning.

About Jaime Casap:

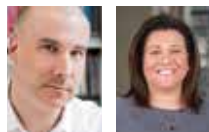
Jaime Casap is the Education Evangelist at Google. Jaime evangelizes the power and potential of technology and the web as enabling and supporting tools in pursuit of promoting inquiry-driven project-based learning models. Jaime collaborates with school systems, educational organizations, and leaders focused on building innovation and iteration into our education policies and practices. He speaks on education, technology, innovation, and generation z, at events around the world. In addition to his role at Google, Jaime serves on a number of boards for organizations focused on education, innovation, and equity. Jaime is also an adjunct professor at Arizona State University, where he teaches classes on policy, innovation, and leadership.

*Credit: AIA LU/HSW = 1
GBCI = 1*

11:30 AM-12:30 PM

The (un)Classroom: Environments that Support Personalized and Immersive Learning Experiences

Learning Commons Classroom by Demco, Inc. KCCC Meeting Room #2104A



David Johnson, Senior Associate, DOWA-IBI Group Architects

Karina Ruiz, Senior Principal, DOWA-IBI Group Architects

It is no longer the future that demands a shift in how we teach and learn; it is the present. For over 100 years, the classrooms in our schools have remained largely unchanged. It's time we begin moving towards the (un) Classroom. Explore how architects and educators can work together to create spaces that complement teaching and learning in revolutionary ways. Learn how these ideas can shape your practice, your schools and the future of learning.

*Credit: AIA LU = 1
GBCI = 1*

Periodic Table of New Generation Learning Environments

Learning in Motion Classroom by DLR Group/Scott Rice Office Works KCCC Meeting Room #2104B



Stephen Sun, Teaching Fellow/ School Designer/4th Grade Teacher, Harvard Graduate School of Education/ School of Design/ Center of Artistry and Scholarship

The tools we use to evaluate the physical nature of learning spaces are often too removed from the curricula design, and worse, are purely evaluative—offering no framework to design progressively. The Periodic Table of Learning Environments is foremost a architecturally generative tool that bridges neuroscience, learning modalities, and design.

*Credit: AIA LU/HSW = 1
GBCI = 1*

Designing for BIG Data: Visualization, Connectivity & Collaboration in Learning Spaces "INTERACT" Classroom

by Learniture KCCC Meeting Room #2105



Craig Park, Principal, The Sextant Group

Explore trends in new and emerging technologies and facilities design related to visualization of data analytics, multi-site connectivity, and group collaboration in inter-disciplinary research and teaching facilities. Examples of recent projects will illustrate approaches to developing common language and a platform for departments to be able to input and share data, and to visualize it in a common, neutral space. Fundamentals of technology planning, budgeting and infrastructure design will also be discussed.

*Credit: AIA LU = 1
GBCI = 1*

STEAM Studio: What Happens When Innovative K-12 Learning is Embedded Amongst Designers?

"ENGAGE" Classroom by Susan Gladden Interiors Exhibit Floor Booth #2304



David Reid, Principal, Gould Evans Design

Mandi Sonnenberg, Professor of Education, Rockhurst University

In year three of operation, STEAM Studio is demonstrating remarkable outcomes. What has made this learning studio in the office of Gould Evans so remarkable? (1) STEM becomes STEAM; (2) "A" (Art) is the activator for creativity; (3) Design Thinking becomes the driving methodology for learning; (4) Students feel empowered as entrepreneurs; (5) Service learning drives the culture; (6) Multiple coaches replace the singular teacher; and (7) Real academic outcomes emerge! We'll share lessons learned and post occupancy research revealing powerful learning outcomes.

*Credit: AIA LU = 1
IDCEC LU = 1
GBCI = 1*

Inspire by Design "THRIVE" Classroom by Moseley Architects Exhibit Floor Booth #2341



Lauren Scranton, Knowledge & Innovation Leader, NAC Architecture

Boris Srdar, Principal Architect, NAC Architecture

Laura Kazmierczak, Principal Architect, NAC Architecture

The presentation will highlight research findings of the benefits of Biophilia in addressing a variety of human emotions and their influence in the learning environment. Analysis will explain both international and domestic examples that have explored these principals in school architecture. By combining five specific Biophilic principles we can create experientially supportive spaces, address the needs of all students and staff, and create even more thoughtful learning environments.

*Credit: AIA LU/HSW = 1
IDCEC LU/HSW = 1
GBCI = 1*

1:30-2:30 PM

Charitable Reuse: Managing Surplus Furniture for Financial, Social, Environmental, and Community Benefit

Learning in Motion Classroom by DLR Group/Scott Rice Office Works KCCC Meeting Room #2104B



David Kinley, VP Sales, MeTEOR Education

Emerson Lennon, Project & Account Executive, IRN: The Reuse Network

Mark Lennon, President & CEO, IRN: The Reuse Network

Every school generates surplus furnishings from routine turnover, replacements, construction. Some can be sold, some recycled for scrap. Most goes into dumpsters. Reuse is a better option — matching surplus furnishings with nonprofit organizations, for distribution in needy communities in America and worldwide. Reuse costs less than disposal, is just as simple, offers great

environmental and social benefits, and sets the right example for students and community. This results-oriented presentation shows how to make it happen.

*Credit: AIA LU/HSW = 1
GBCI = 1*

Supporting Sensory-Sensitive Learners in the Classroom Environment

"ENGAGE" Classroom
by Susan Gladden Interiors
Exhibit Floor Booth #2304



Dr. Jane Humphries, Owner, Creative Educational Strategies & Services

Kari Rains, Consultant, Creative Educational Strategies & Services

This workshop is to equip participants with information to help them best understand the needs of sensory sensitive children, Pre-K through 6th grade. The presenters will review how school-age children process their sensory environment while participants explore their own sensory preferences; investigate ideas to apply when designing and developing environments that support sensory sensitive children; and explore recommendations to meet the needs of school-age children utilizing sensory equipment and materials.

*Credit: AIA LU/HSW = 1
IDCEC LU = 1
GBCI = 1*

Sustainability in Education: Proposed Early Learning Center River Trails School District 26 "INTERACT" Classroom by Learniture

KCCC Meeting Room #2105



Ron Richardson, Principal, FGM Architects

Peggy Hoffmann, Principal, FGM Architects

Lyndl Schuster, Ed.D., CSBO, Assistant Superintendent for Business Services, River Trails School District 26

This session will feature a presentation of the proposed Early Learning Center for River Trails School District 26 which is designed to be a net-zero energy usage building. The presentation will address the particular characteristics of an early learning center

and how sustainability is integrated into the curriculum and the design of the facility to support authentic and hands-on learning.

*Credit: AIA LU/HSW = 1
GBCI = 1*

Making Change happen: Combining Pilot Classrooms and Professional Development "THRIVE" Classroom

by Moseley Architects
Exhibit Floor Booth #2341



Laura Casai, IIDA, LEED AP, Director of Interior Design Education Practice, TMP Architecture, Inc.

Danielle O'Grady, IIDA, Interior Designer, TMP Architecture, Inc.

Sometimes it's best to test the water before jumping in. As part of St. Clair County Regional Educational Services' "Classroom 4 the Future" program, 13 teachers received funds to transform their classrooms and expand their professional comfort zones. The selected teachers came from a range of seven local districts and taught varied grade levels and subjects. Join us to learn what happened when we combined intensive professional development and interior design to transform both teachers and classrooms for modern learning. The results are inspiring.

*Credit: AIA LU = 1
GBCI = 1*

3:30-4:30 PM

BRAIN + SPACE + LEARNING – Empowering Learning for the Innovation Economy

Learning Commons Classroom
by Demco, Inc.
KCCC Meeting Room #2104A



Tomas Jimenez-Eliaeson, Design Director, Learning Environments, LITTE

What is the relationship between the Brain, Learning and Space? This presentation will introduce the award-winning and ground-breaking Invest Collegiate Charter School in Charlotte, NC (a K-8 school) as an example of how to implement a learning environment that supports Innovation in learning with the brain and body in mind. We will demonstrate the roles that Wellness, Neuroscience, Creativity

and Culture-Making play in designing a K-8 teaching and learning environment for the Innovation Economy.

*Credit: AIA LU/HSW = 1
IDCEC LU = 1
GBCI = 1*

Building for Student Success Learning in Motion Classroom

by DLR Group/Scott Rice Office Works
KCCC Meeting Room #2104B



David Eggen, Director of Educational Facilities, Boulder Valley School District

Kiffany Lychock, Director of Educational Innovations, Boulder Valley School District
With our Bond and Strategic Plan

Implementation under way, the Boulder Valley School District is excited to share our planning and processes with other school districts and building leaders. During this session, we will share how we have focused our Innovation work on learning environments and teaching/ learning practices. The goal is that these spaces will act as a catalyst to engage students in learning that supports the mission and vision of our strategic plan, The Success Effect. By using Innovation as the bridge that connects our Strategic Plan Implementation and our Bond Project, we seek to shift both where we teach and learn (space) and how we learn (innovative teaching and learning strategies).

*Credit: AIA LU = 1
GBCI = 1*

History and Inspiration: How Racial Integration has Shaped Two DC Area Schools

"INTERACT" Classroom by Learniture
KCCC Meeting Room #2105



Devon Hogan, Associate, Quinn Evans Architects

Jeffrey Luker, Principal, Quinn Evans Architects

History often inspires design. This has been especially true for two schools located within and near to Washington, DC. For the Adams Morgan Community in Washington, DC, the Marie Reed Learning Center was originally developed to replace a pair of segregated schools with a single mixed-use health,

recreation and elementary school facility. For the Arlington, VA Community the Stratford Junior High School was selected by our Federal Court System to become the first integrated school program in the State of Virginia. Come explore the ways that these histories have been celebrated in the resultant preservation/renewal designs.

Credit: AIA LU/HSW = 1
GBCI = 1

The Unimagined Future of Learning Spaces

"ENGAGE" Classroom
by Susan Gladden Interiors
Exhibit Floor Booth #2304



Christine Schein, Digital Literacy Instructional Specialist, Colorado Department of Education

The race is on to change the outdated school environment to meet today's pedagogical needs. However, what about 5 – 10 years from now? It is necessary to be proactive to meet the converging needs of pedagogy and space design as we hurtle towards mid-21st Century. Join this session as we review the New Media Consortium/CoSN 2017 K–12 Horizon Report for key technology trends and developments, digital health and wellness implications, and other education predictions that impact our students learning, health, and ultimately their future.

Credit: AIA LU = 1
GBCI = 1

Closing the Opportunity Gap: Case Study of the Fairchild Wheeler Interdistrict Magnet Campus

"THRIVE" Classroom
by Moseley Architects
Exhibit Floor Booth #2341



James LaPosta, Principal / Chief Architectural Officer, JCJ Architecture

James Hoagland, Senior Associate, JCJ Architecture

The Fairchild Wheeler Interdistrict Magnet Campus, a 2016 MacConnell Award winner, is a public high school that has defied the odds. Created to combat an ever growing gap in opportunity, the school faced numerous obstacles during its 10-year planning period. The panel will share the stories behind the schools success; the marriage of educational vision and design, the unlikely coalition that

developed the curriculum, and the challenges and successes of the school's first 3 years.

Credit: AIA LU = 1
GBCI = 1

Friday, October 27

9:30-10:30 AM

Creating the World's Most Pedagogically-Advanced School Building

"INTERACT" Classroom
by Learniture
KCCC Meeting Room #2105



Carla Remenschneider, RID, Director of Interior Design, Fanning Howey

Ed Schmidt, AIA, Director of Project Management, North America, Nord Anglia Education

Join us in a deep-dive of the British International School of Houston, one of the highest-performing schools in the world. Learn how the planning for the new building turned reluctant educators into powerful advocates. Discover how the school's design was inspired by caves, campfires and watering holes. Uncover lessons learned from teachers and students who have spent two years in the new space. And come away with new strategies for creating your own word-class facility.

Credit: AIA LU/HSW = 1
GBCI = 1

Achieving Healthy, High Performing Schools

"ENGAGE" Classroom
by Susan Gladden Interiors
Exhibit Floor Booth #2304



Sara Greenwood, Principal, The Greenwood Consulting Group, LLC

Jenson Adams, Energy & Sustainability Manager, Operations Department Kansas City Public Schools

The Greenwood Consulting Group, LLC (GCG) has managed the green building certification of K12 and Higher Education pursuing different rating systems located

across the country. GCG has also helped to inform updates to the Collaborative for High Performance Schools (CHPS) rating system. Learn strategies that achieved optimal energy, water and acoustical performance while improving student and faculty health. Discuss what it means to design a healthy, high performing school and how to prioritize goals early on.

Credit: AIA LU/HSW = 1
GBCI = 1

Extreme Makeovers: Dealing With the Realities of Existing Building Renovations

"THRIVE" Classroom
by Moseley Architects
Exhibit Floor Booth #2341



Dan Kemme, Principal, Dekker/Perich/Sabatini

Heidi Frohnapfe, Project Manager, Design, New Mexico State University

Sanjay Kadu, Principal, Dekker/Perich/Sabatini

Kizito Wijenje, Director, Capital Master Plan, Albuquerque Public Schools

The decision to renovate or build new can have long-term consequences for institutions. Renovation might be less expensive, faster, or involve historic or sentimental buildings. However, existing space may also be inefficient, outdated and unable to serve current teaching methods without compromises. This session will explore factors to be considered when making the decision to keep, extensively modify, or demolish and build new, using examples from both the K–12 public school and university levels.

Credit: AIA LU/HSW = 1
GBCI = 1